



LOCATION MAP

BUILDER & DEVELOPERS



Corporate Office : R-52, Third Floor, Zone-II,
M.P. Nagar, Bhopal-462011 Ph.: 0755-4271929
E-mail : grandridgehomes@gmail.com
Website:- www.grandridgehomes.com

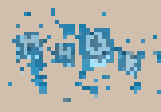
Town Planner



Architect



3D Design by



Creative Design by



Project Office : River Ville, Chhindwara-Parasia Road, Greater Chhindwara (Gangiwada) M.P.

for booking details contact
+91-8818878664, 9826861959, 8818878665

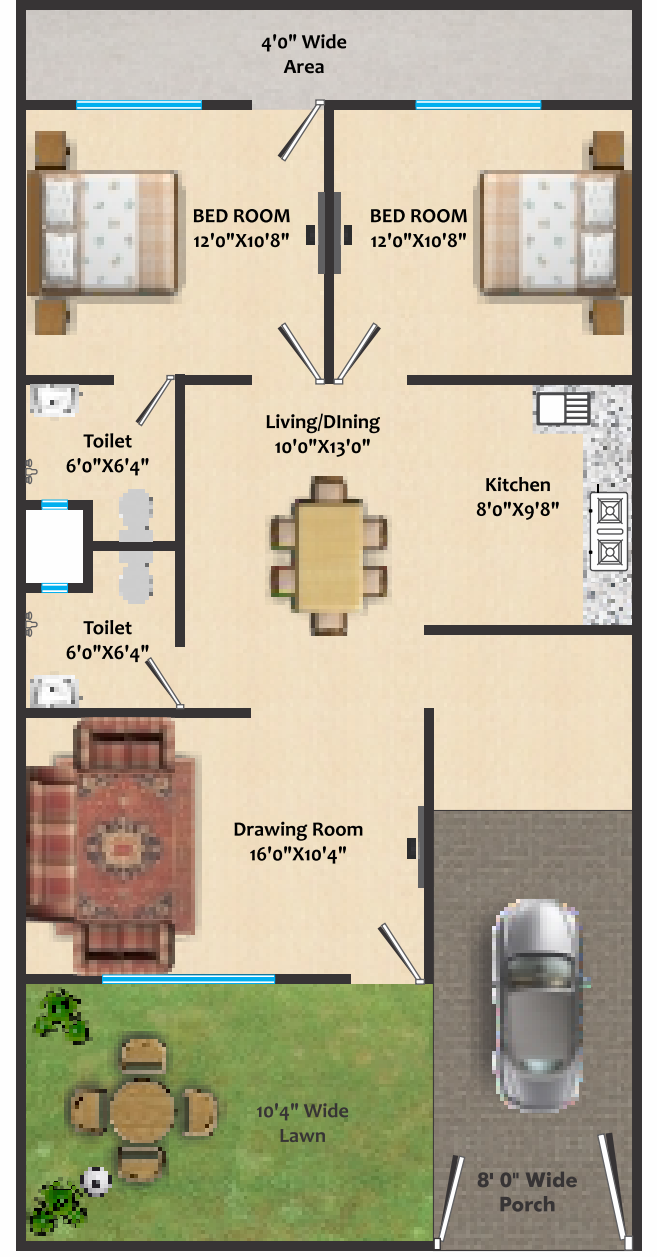
This visuals and information contained in this brochure is indicative of the kind of development that is proposed. The promoters / developers reserve the right to change plans, specifications or features, without prior notice or obligation. This brochure is issued for guidance only and does not constitute part of offer or contract.

B H O P A L | M A N D I D E E P | T I M A R N I | S E O N I - M A L W A | A N U P P U R | K A R E L I | C H H I N D W A R A





BLUE BELL COZY





JOYFUL LIVING ... !

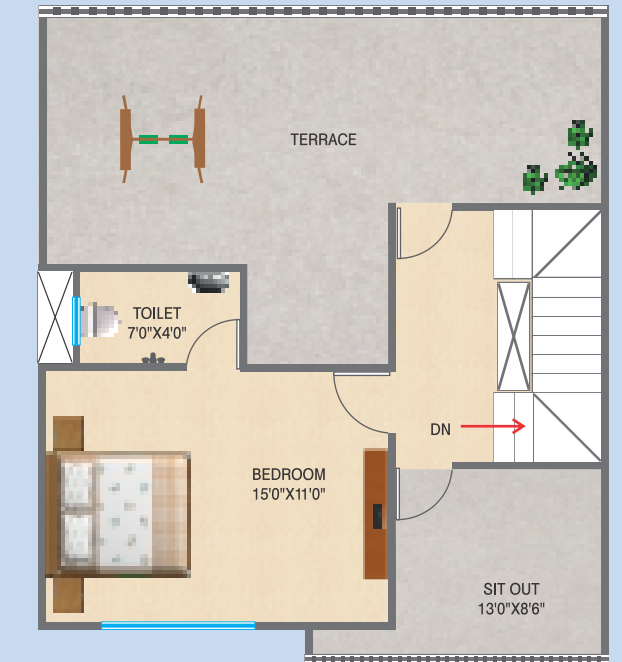
After the stupendous success of many township having modern architectural and beautiful designed landscaping – offers you yet another unique opportunity to own a home at river ville.

bluebell
bungalow

PLOT SIZE
25' x 50'

PLOT AREA
1250 Sq.Ft.

Const. Area
1290 Sq.Ft.



FIRST FLOOR PLAN



GROUND FLOOR PLAN



SMART CHOICE FOR SMART LIVING...!

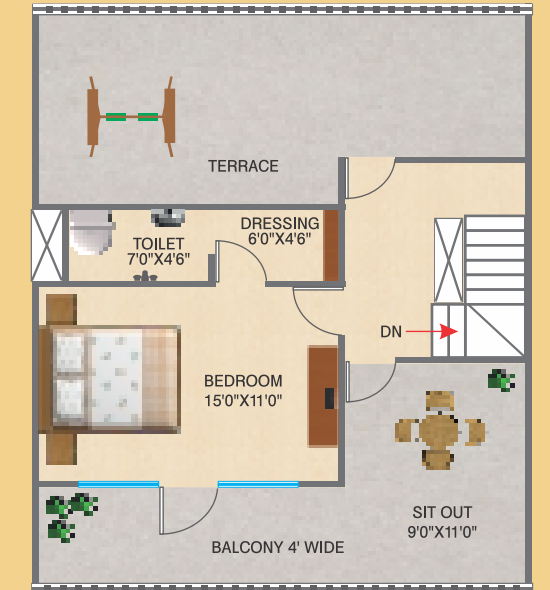
Stylishly designed, spacious laid out homes gives you an opportunity to reveal in luxury as you take in the best in both the world.

aster
bungalow

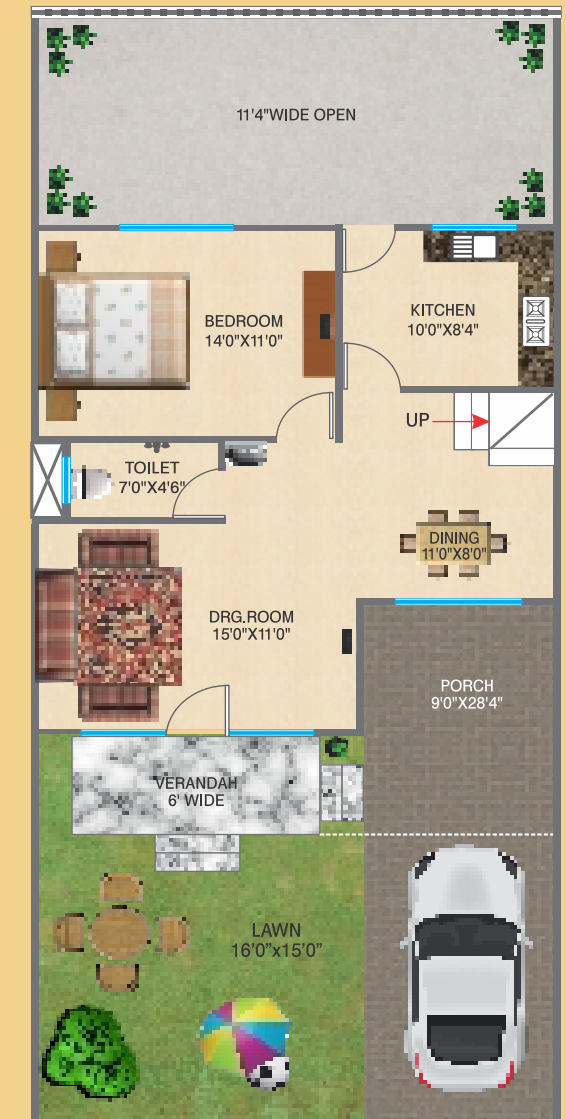
▶ PLOT SIZE
25' x 60'

▶ PLOT AREA
1500 Sq.Ft.

▶ Const. Area
1450 Sq.Ft.



FIRST FLOOR PLAN



GROUND FLOOR PLAN



LIVE IT UP...!

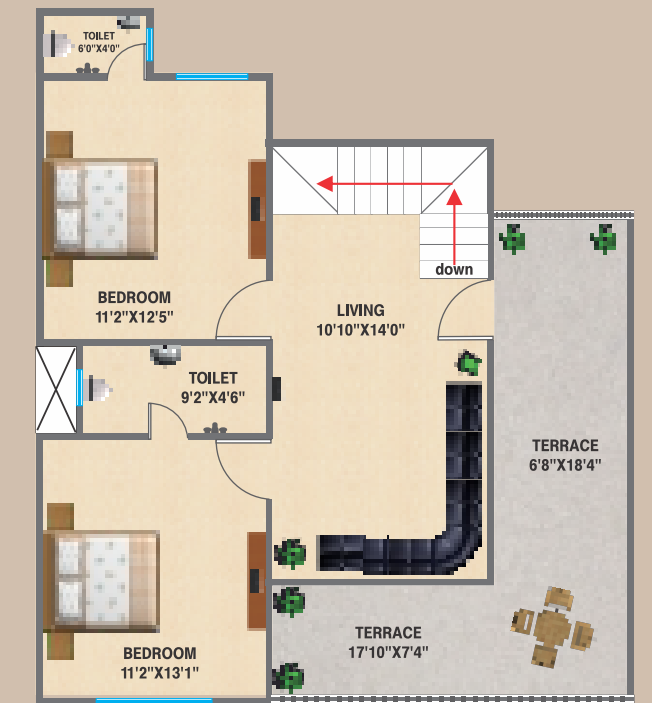
Every villa showcases minimalistic design and fluid spaces that lend a wonderful airy feeling of a securely gated township. Elevating your lifestyle to an entirely new level.

iris plus
bungalow

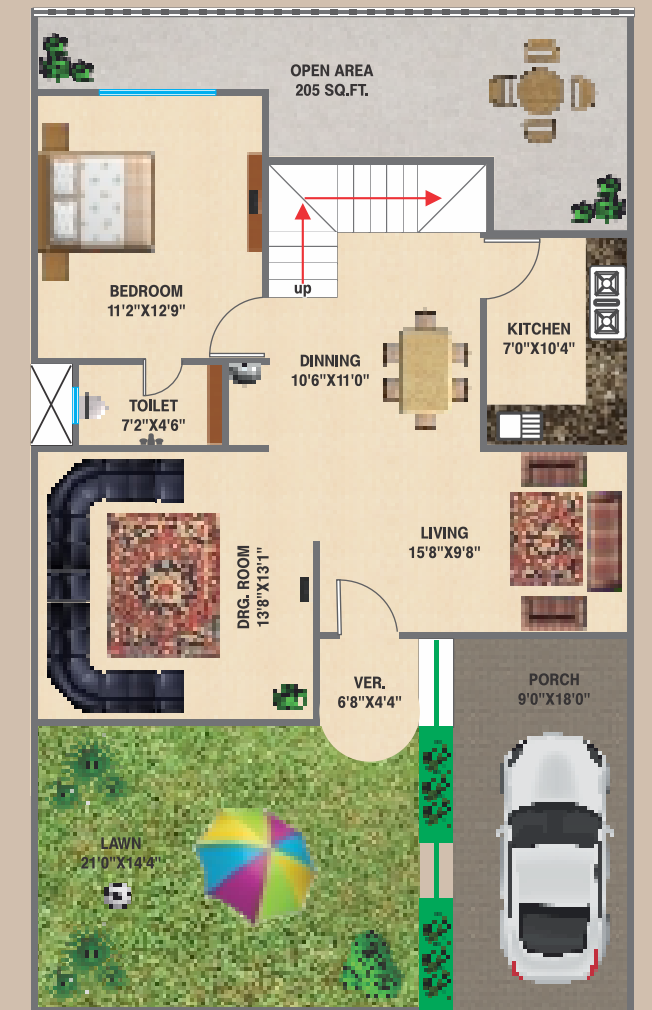
PLOT SIZE
30' x 50'
30' x 50'

PLOT AREA
1500 Sq.Ft.
1500 Sq.Ft.

Const. Area
1875 Sq.Ft.
1690 Sq.Ft.



FIRST FLOOR PLAN



GROUND FLOOR PLAN





UNIQUE LIFESTYLE... !

Quality of life in "River Ville" is characterized by outstanding levels of comfort and happiness. Self contained, with recreational and leisure amenities and facilities, the project invites you to step into your paradise.

OUT OF THE WORLD DESIGN...



EXPERIENCE THE BEST OF BOTH WORLDS

The bounty of nature and modern conveniences of the city. We have planned to set up a full service club house and provide plenty of leisure area where you can connect with yourself and discover the little joy of life.

RIVER VILLE OFFERS

- 2/3 BHK Lifestyle well designed homes.
- Club House with Gynasium, Indoor Games and Pool.
- Children's Play Area with Skatting & Cycle Rink.
- Community Hall, Senior Citizen Corner & Walkway.
- Well Decorated Garden and Kids Sports Arena.
- Privacy and security of a gated community.
- Convenience and added comforts available.
- Lawn Tennis and Basketball Court.



OUR OFFERINGS

- Top of the class quality construction and development.
- Decorated gardens and electrical poles with street lights.
- Just a few minutes drive from chhindwara city centre.
- Elegantly designed main entrance gate with 24x7 security.
- CC/Paved block road along with proper drainage and sewage system
- 100% effective space utilisation with attractive elevation.
- Close proximity from developed infrastructure & civic Necessities.
- Well connected to city landmark and express ring road.



LIVE THE BLISSFUL LIFE...!

River Ville introduces new beautifully crafted and amazingly designed residential project at Greater Chhindwada for its new venture. The project offers variety in residential homes at affordable prices with all world class amenities.



Offers a collection of lifestyle villas and row house bungalows strategically located and nested in the slope of lush green area and riverside views seamlessly blend life's finest pleasures with breathtaking natural surroundings



FIRST FLOOR PLAN



GROUND FLOOR PLAN


LOOK AT LIFE AFRESH...!

River Ville is closed from chhindwara city centre and close proximity from the ring road which secure it the most desirable destination in upcoming new development in city surroundings and most sought after destination for the residences.



 aster bungalow	Plot Area	Plot Size	Grant Area
	100 Sq. Ft.	10' x 10'	100 Sq. Ft.

 bluebell bungalow	Plot Area	Plot Size	Grant Area
	150 Sq. Ft.	10' x 15'	150 Sq. Ft.

 iris plus bungalow	Plot Area	Plot Size	Grant Area
	200 Sq. Ft.	10' x 20'	200 Sq. Ft.

SPECIFICATIONS

- STRUCTURE**
Safe & Sound - Quality controlled RCC frame structure with best material components.
- BRICK WORK & PLASTER**
Good quality brick masonry with finished plaster surface.
- FLOORING**
Good Quality Vitrified tiles flooring 2'0"x2'0".
- BATHROOM**
Anti Skid Flooring & Wall Tiles upto 7' Height.
- DOORS & WINDOWS**
ISI Mark Flush doors with safety locks. Superior Quality hardware fittings. Aluminum windows.
- ELECTRICAL WORK**
ISI Mark Modular Electrical Switches And Accessories.
- PLUMBING & SANITATION**
Good quality designer sanitary ware for toilets.
- POP WORK**
POP Designer cornish.
- PAINTING**
Exterior- Weather Resistant Good Quality Paint.
Interior - Double Coat Putty with Good Quality Paint.
- KITCHEN**
Green marble platform with ceramic tiles dado upto 2' height. Aqua guard point & exhaust fan point.
- STAIRCASE**
Green Marble / Vitrified Tiles With Moulding
- PORCH / BACK OPEN**
Checkeded tiles / Paving block.